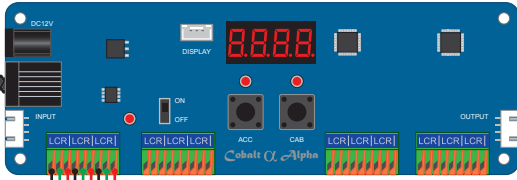


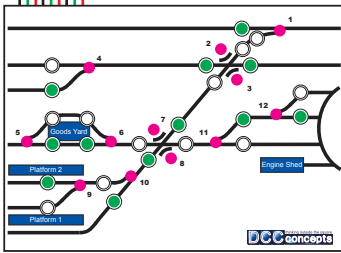


ESP Receiver & Alpha Interface Linking ECoS With ESP TX And Alpha Mimic & Encoder

Alpha Encoder Unit
DCD-AEU

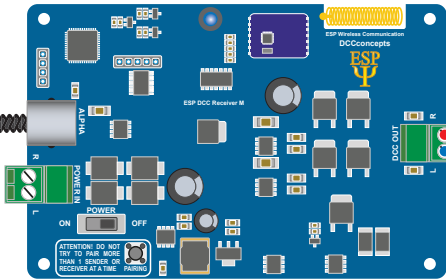


DCD-SW12.150 or
DCD-SW3.10



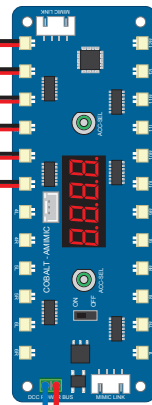
Control Panel With Alpha Toggle Switches
On-Off-On Sprung Toggle Switches
DCD-ATS

RJ12 6 Core Cable DCD-ACL
or 6 Core Flat Cable

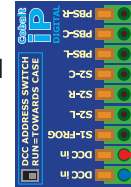


ESP Receiver and
Alpha Interface
DCC-ESP.RX

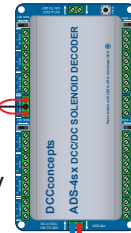
Alpha Mimic
DCD-MPGN
Available in Green,
Red, Red/Green,
Blue & Red/White



Cobalt iP Digital
Point Motor
DCP-CB1DIP



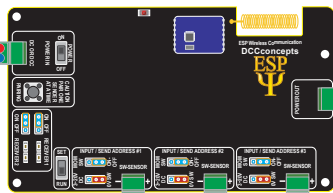
Solenoid Accessory
Decoder
DCD-ADS-4SX



DCC Track/
Power Bus

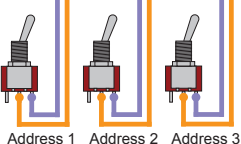


12V Regulated
DC, Battery,
PSU or DCC

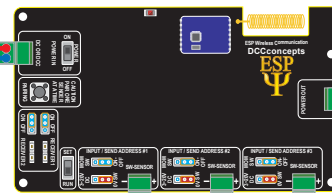


ESP 3-Output
DCC Transmitter
DCC-ESPS.3

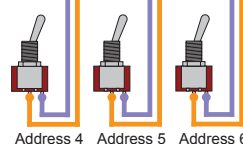
BLUE jumper is set
to ON/OFF and
RED jumper is set
to 0V SW



Switches can be either
SPST or SPDT type



Connection to
the optional next
ESP Transmitter
board



Jumpers for
Receiver 1 set
to ON