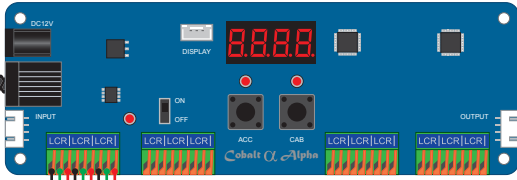
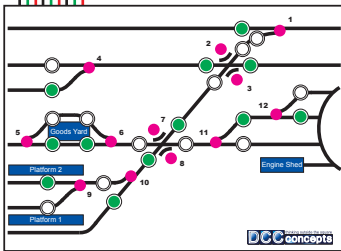


## ESP Receiver & Alpha Interface Linking ECoS With ESP TX And Alpha Mimic & Encoder

Alpha Encoder Unit  
DCD-AEU

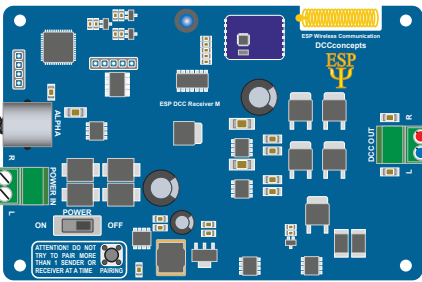


DCD-SW12.150 or  
DCD-SW3.10



Control Panel With Alpha Toggle Switches  
On-Off-On Sprung Toggle Switches  
DCD-ATS

RJ12 6 Core Cable DCD-ACL

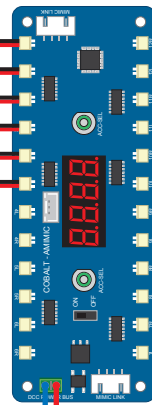


ESP Receiver and Alpha Interface  
DCC-ESP.RX

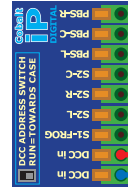


12V 1.5Amp Regulated  
Power Supply  
DCP-PS12

Alpha Mimic  
DCD-MPGN  
Available in Green,  
Red, Red/Green,  
Blue & Red/White



Cobalt iP Digital  
Point Motor  
DCP-CB1DIP



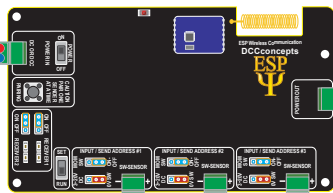
Solenoid Accessory  
Decoder  
DCD-ADS-4SX



DCC Track/  
Power Bus

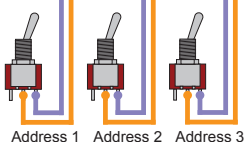


12V Regulated  
DC, Battery,  
PSU or DCC

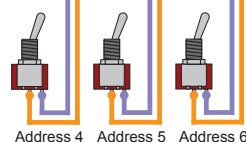
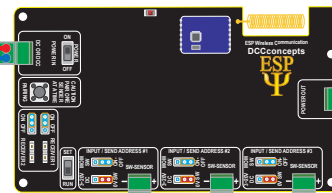


ESP 3-Output  
DCC Transmitter  
DCC-ESPS.3

BLUE jumper is set  
to **ON/OFF** and  
RED jumper is set  
to **0V SW**



Switches can be either  
SPST or SPDT type



Connection to  
the optional next  
ESP Transmitter  
board

Jumpers for  
Receiver 1 set  
to **ON**